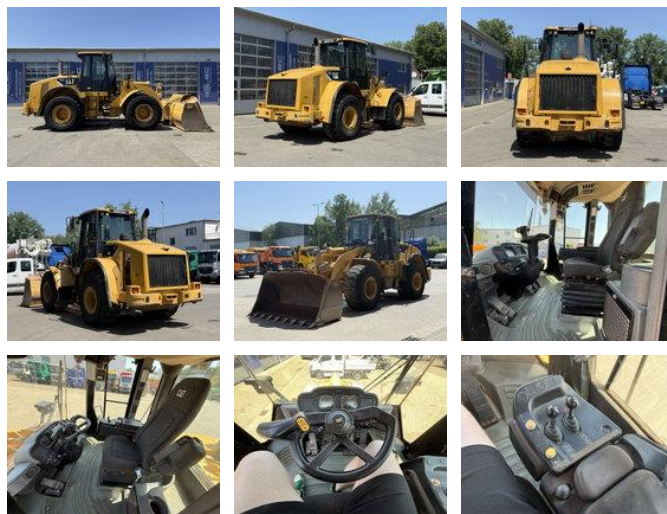


## Caterpillar 950H Radlader MIT Schaufel 18,5 Tonnen \*6.294 h

### General characteristics

Price	€ 1
Brand	Caterpillar
Subcategory	Wheel loader
Year of construction	2011
Date of first registration	01-06-2011
Hours displayed	6294
Condition	Used
Fuel	Diesel
Reference	G400170



### Properties

GVW

18.500kg

# Caterpillar 950H Radlader MIT Schaufel 18,5 Tonnen \*6.294 h

## Technical specifications

Number of axes	2
Axis configuration	4x4
Transmission	Automatic
Drive	wheels
Assets	146kw

## Description

Damages: none MOT: 05.2028

## Accessories

- Automatic
- Air conditioning
- All wheel drive