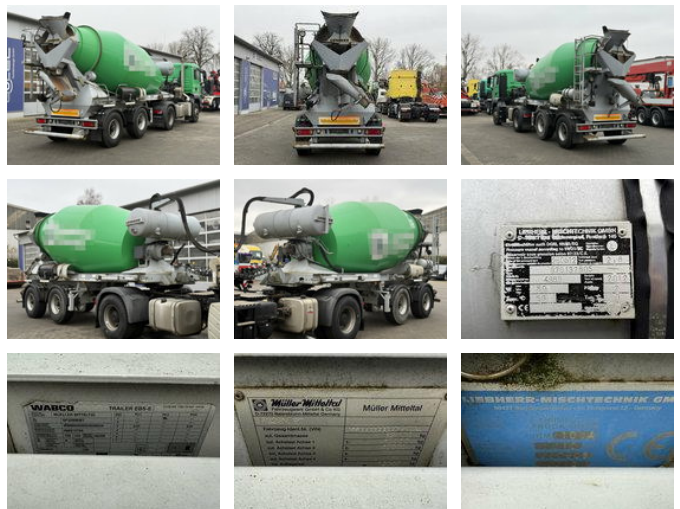


Liebherr Andere Betonmischer Concrete Auflieger 10 m³

General characteristics

Price	€ 9.800
Brand	Liebherr
Subcategory	Concrete mixer
Meter reading	1km
Year of construction	2012
Date of first registration	01-07-2012
Condition	Used
Fuel	Diesel
Emission class	Euro 5
Reference	G300402_Beton



Properties

Single weight	7.371kg
Load capacity	13.629kg
GVW	21.000kg
Cylinder capacity	10.518cc

Liebherr Andere Betonmischer Concrete Auflieger 10 m³

Technical specifications

Number of axes	4
Axis configuration	8x4
Transmission	Manual transmission
Assets	1kw

Description

Environmental badge: green Damages: none MOT: 05.2028

Accessories

- Anti-lock braking system
- Air conditioning
- Electrically operated windows
- Air suspension