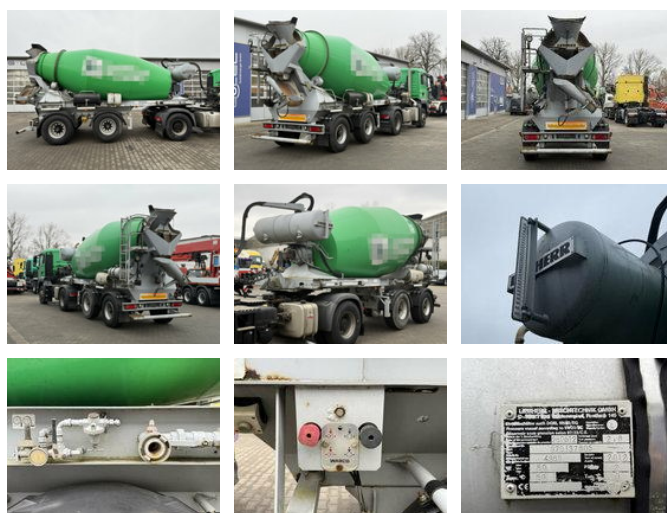


Müller-Mitteltal Liebherr Betonmischer Concrete Auflieger 10 m³

General characteristics

Price	€ 8.900
Brand	Müller-Mitteltal
Subcategory	Other semi trailers
Year of construction	2012
Date of first registration	01-07-2012
Condition	Used
Reference	G300402



Properties

Single weight	2.150kg
Load capacity	29.850kg
GVW	32.000kg

Müller-Mitteltal Liebherr Betonmischer Concrete Auflieger 10 m³

Technical specifications

Number of axes

2

Description

Damages: none MOT: 07.2028

Accessories