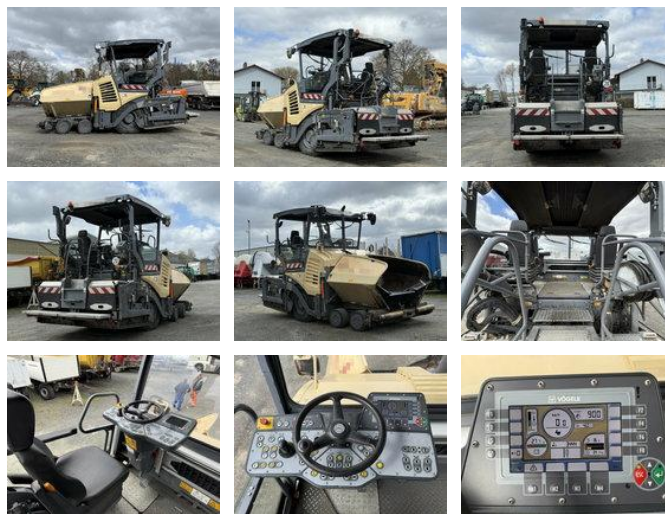


Vogele SUPER 1803-3i Asphaltfertiger auf Reifen 4600 h

General features

Price	€ 134.900
Brand	Vogele
Subcategory	Other asphalt equipment
Construction year	2019
Hourmeter reading	4600
Condition	Used
Fuel	Diesel
Reference	G400104



Characteristics

Empty weight	18.300kg
Load capacity	2.500kg
GVW	20.800kg

Vogele SUPER 1803-3i Asphaltfertiger auf Reifen 4600 h

Technical specifications

Engine output

125kw

Description

Damages: none

Accessories

- Air conditioning